

# FOR LEASE

Lease Rate: \$15.00 /sq. ft. NNN

## Office at Jordan Landing

7611 South Jordan Landing Blvd. West Jordan Utah 84084



### Property Information:

- Total Available: 1,500 - 3,000 RSF
- 5/1000 Parking Ratio
- ADA accessible with elevator
- 24/7 Security Card Access
- Monument Sign Available
- Easy Access to Bangerter Highway on 7000 and 7800 South
- Near Jordan Landing, retail, and restaurants
- NNN's are \$6.00/SF



- Suite 200
  - 2,666 RSF
  - 8 offices
  - Reception
  - Breakroom
  - Outdoor Deck
- Suite 202
  - 1,500 RSF
  - 3 offices
  - Open area
  - Breakroom
- Suite 130
  - 1,500 RSF
  - 4 offices
  - Reception with kitchenette
  - Private Bathroom
  - Sinks in 2 offices

### CONTACT:

Spencer Knight  
801.580.4947  
Knight.spencer@gmail.com



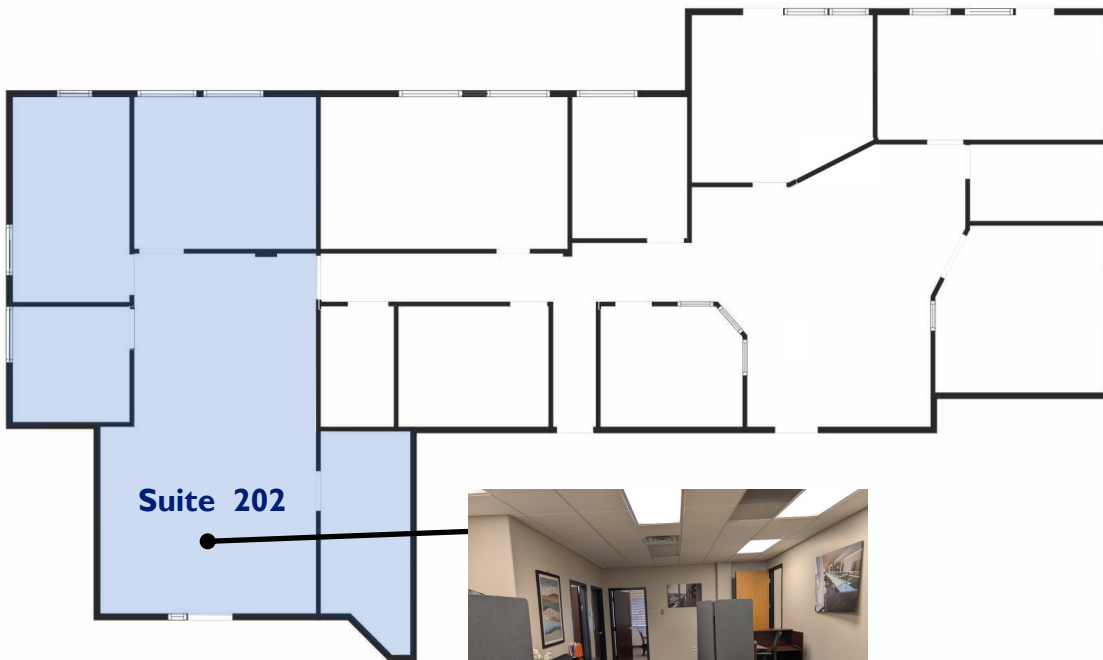
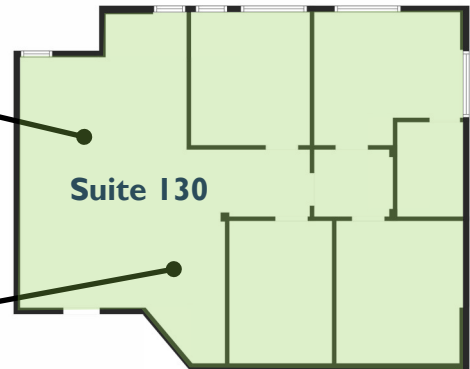
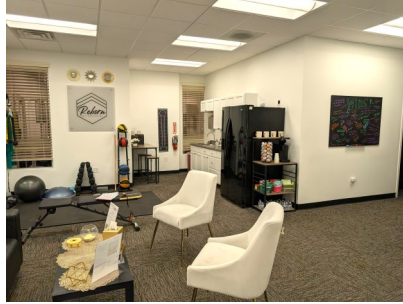
### CONTACT:

Stew Knight  
801.913.4990  
stew@knirea.com  
knirea.com



# Office

7611 South Jordan Landing Blvd. West Jordan



## Floor Plans

### CONTACT:

Spencer Knight  
801.580.4947  
Knight.spencer@gmail.com



### CONTACT:

Stew Knight  
801.913.4990  
stew@knirea.com  
knirea.com



# Office

7611 South Jordan Landing Blvd. West Jordan



**CONTACT:**

Spencer Knight  
801.580.4947  
Knight.spencer@gmail.com



**CONTACT:**

Stew Knight  
801.913.4990  
stew@knirea.com  
knirea.com



This statement, with the information it contains, is given with the understanding that all negotiations relating to the sale, purchase, or lease of the property described above shall be conducted through this office. The above information, while not guaranteed, has been secured from sources we believe to be reliable. Buyer or tenant to verify the square footage.